

THE LEICESTERSHIRE  
ARCHAEOLOGICAL & HISTORICAL SOCIETY  
THE GUILDHALL · LEICESTER · LE1 5FQ



## NEWSLETTER 119 Summer 2023

Welcome to the latest edition of the LAHS Newsletter. Contributions to future editions of the Newsletter are as always welcome at any time. These can be emailed to the Newsletter editor, Cynthia Brown, at [newsletter@lahs.org.uk](mailto:newsletter@lahs.org.uk).

If you are a LAHS member and have not been sent the Newsletter by email, or you have been sent a paper copy of this newsletter and you would prefer to receive it by email, then please do let us know by sending a message to [membership@lahs.org.uk](mailto:membership@lahs.org.uk).

### LAHS NEWS

#### LECTURE PROGRAMME FOR 2023- 24 SEASON

LAHS Hon Lectures Secretary Yolanda Courtney is working on the lecture programme for 2023 -24, commencing in September. Members will be updated as soon as this is finalised.

#### NEWS FROM THE LIBRARY

**\*\* Please note that the Hon Librarian is unable to be at The Guildhall on Sunday 18 June, so we regret that it will not be open for visitors.**

Library use this year has been minimal, although your Librarian is not at a loss for jobs to do. Guildhall tours, as mentioned previously, are continuing on some Sundays and the Library is visited by mixed groups. One in April consisted of American visitors to Leicester, who were particularly interested in some of our older books and asked about the Society's young membership.

#### ACQUISITIONS

Twenty booklets have been donated by author and historian Jan Zientek, and they reflect his wide range of interests. It is good that so much research has been published and will be available, particularly in the LAHS Library as the work of a member. All are illustrated. The Society is very grateful for this donation. The booklets are listed below.

All Saints' Shawell: a church history. 2017.

By bus to India Aug. –Oct. 1957: the memories of Miss Mildred Jessie Read of Mountsorrel. 2021.

Centuries of change: a taste of stained glass of the 16<sup>th</sup> to 19<sup>th</sup> centuries and bird quarries of the 15<sup>th</sup> & 17<sup>th</sup> centuries. 2021.

History of St. Mary's Humberstone Mothers' Union part 1 1915 – 1991; part2 1992 – 2022. 2022.

History of the Humberstone Drama Society. 2022.  
 Launde from priory to Diocesan retreat house. 2022.  
 Launde Leaves: articles from Launde Leaves 1988. 2022.  
 Letters of Richard Barrass part 1 Introduction and 1947 – 1953; part 2 Introduction and 1953 – 1995. 2021.  
 Mediaeval stained glass from the 13<sup>th</sup> to 16<sup>th</sup> century: a view into a vanished world. 2021.  
 Noseley Chapel: a brief history and guide. 2022.  
 Raphael Brandon: the tragic story of a gifted architect and his works. 2021.  
 Raphael Brandon. Catalogue of the exhibition at St. Mary's Humberstone. 2019.  
 Revd. Arthur Runnells Runnells-Moss, Rector of St. John's Ladywood 1888 - 1921 and All Saints' Shawell 1921 – 1937: passionate West Indian priest, promoter of the faith and good literature. 2022.  
 St. Mary's church Humberstone: a church guide. 2022.  
 St. Mary's church Humberstone: a guide to the stained glass windows. 2022.  
 Short history of Christ Church, Bow Street, Leicester 1839 – 1956. 2022.  
 Short history of St. Barnabas, New Humberstone 1882 – 2019. 2022.  
 Voices of World War 1 seen through family memories, letters, diaries and in reports from the Great Central Railway Journal of the time. 2017.

We are grateful as always for other kind and thoughtful donations, listed below with other books and pamphlets.

CHRISTIAN, G. ed. Victorian poacher: James Hawker's journal. 1961 (1979 pb. rep.). Information on Oadby. Donated by Jim McCallum.  
 ECONOMIC STAMPINGS LTD. Leicester Precision Pressings. [1960]. AND 'Five employees and one bike' (Knitting International Jul. 1976 rep.). This company was part of the Bentley Group and did work for the local knitting industry. Donated by M. Hargrave, Canada.  
 FISHER, P. & WATKINS, A. Lutterworth (Victoria History of Leicestershire). 2022. Donated by Pam Fisher. The support of LAHS is acknowledged  
 GAMBLE, M. Ratby service: the story of Astill & Jordan. 2014. Copy 297 of 530, signed by the author.  
 Leicester Heritage Trail. Leicester City Council, [2022].  
 PHILLIPS, K. ed. Loughborough markets and fair 1221 – 2021. Loughborough Library Local Studies Volunteers, 2022. Donated by the publisher.  
 PUBLIC CATALOGUE FOUNDATION Oil paintings in public ownership in Leicestershire, Lincolnshire & Rutland. 2012. This monumental work of over 400 pages is an entire photographic record of the art.  
 RICHARD III SOCIETY The reburial of King Richard III. 2015.  
 ROBERTS, P. The adventures of a black Edwardian intellectual: the story of James Arthur Harley. 2022. Harley was a curate in Shepshed and elected to the County Council. Donated by Elizabeth Tingle.  
 ROWBOTTOM, J. Aylestone Park. (Aylestone Journeys into the Past. Vol. 4). 2022. Donated by the author. Vols. 1 – 3 are in stock.  
 Sikh Troops War Memorial [Leicester]. 2022.  
 SPEIGHT, A. History of Nanpantan Hall. 2021.  
 WESSEL, C. Desford personalities of the past. 2021. Donated by the author, a Committee member of the Society. There are numerous LAHS references throughout.

## **PERIODICALS**

Derbyshire Archaeological Journal 142 2022. 'Derbys. population statistics 1563 – 1801' Includes nine Leics. places.

English Place-Name Society Journal 53 2021.

Hinckley Historian Winter 2022. Donated by Hinckley & District Museum.

LAHS Transactions 96 2022.

Rutland Record 42 2022. Includes Castle Hill, Uppingham; James Pickering & cropmarks; William Stukeley; Hambleton Hall. Donated by the Editor.

SPAB Magazine Winter 2022; Spring 2023.

The file of the EP-NS Journal 1 (1968-9) to date (see above) has been moved to bookcase V-3 for easier access. A list of articles relating to Leics. & Rutland has been compiled and is on the shelf for reference. Examples of such articles are: 'Furze, gorse & whin: an aside on Rutland in the Danelaw'; 'Note on a Guthlac's Stone'; 'Corieltavi, Romans & Romano-British: a Leics. legacy'.

## **NEWSLETTERS** current copies only on the Library table

Antiquary Annual Review 2022/3. First edition of a new Society of Antiquaries magazine.

Kent Archaeological Society Magazine Winter 2022

SPAB What's On Spring 2023

Worcestershire Recorder Spring 2023-05-16

We continue to receive catalogues from Cottage Books which always include Leics. items... for your own bookshelves? Three received so far this year.

Aubrey Stevenson, Hon. Librarian.

## **LAHS HISTORY FAIR 2023**

Jim Butler reports that the event was attended by more than 1500 people and was 'a huge success. It was clear from the general buzz around the event and the anecdotal evidence from stallholders, guest speakers, re-enactors and visitors alike, that all who attended had found something, if not lots of things, to engage with. Even better was that we got new members joining the society! What was particularly striking was the sense of community conveyed by all the stallholders, and how many of them seemed to regard LAHS as a sort of father figure and the History Fair as a kind of family reunion. This may have been enhanced by the fact that, being in mid-March, the fair was the first event on the calendar of this type. However, it does prompt thoughts about if - and how - LAHS should and could foster this role to help the smaller groups across the region. Immediately after the event, there were numerous queries by both stallholder and participants about when the next fair would be. We will keep you informed about a decision on this'.

## **LAHS PUBLIC HERITAGE FUND**

LAHS has been pleased to contribute to the renovation of the porch at the church of St Mary and St Hardulph at Breedon on the Hill by funding new interpretation panels to explain to visitors the history and significance of the church. The renovation also includes a contactless payment system, funded by East Midlands Airport Community Fund, to enable visitors to make donations to the church without the need for cash. If you are interested to know more about the history of the church, visit [Breedon on the Hill | Leicestershire & Rutland Church Journal \(leicestershirechurches.co.uk\)](https://www.breedononthehill.org.uk/). Further information about the LAHS Public Heritage Fund and other LAHS research funds is available at [LAHS - Research \(le.ac.uk\)](https://www.le.ac.uk/laahs/).

## **PROFESSOR DAME ROSEMARY JEAN CRAMP**

We are very sorry to inform you of the death of Professor Dame Rosemary Cramp on 27 April 2023 at the age of 93. Rosemary was born at Cranoe in May 1929 and attended Market Harborough Grammar School prior to St Anne's College, Oxford, where she read English. She was a long-time member of LAHS and its President from 2005 – 09. Her Presidential Address in February 2009 on 'New directions in the study of Anglo-Saxon sculpture' is available online at [03 BP - The Expedition copy \(le.ac.uk\)](https://www.le.ac.uk/~leahs/03BP-TheExpeditioncopy). Other accounts of her work can be found in *Transactions*, including Vol. 28, p.47 - finds at Glooston, and Vol. 51, p.42 on Breedon stone carvings. Rosemary was the first woman to be promoted to Professor at Durham University in 1971, serving as Head of Department in Archaeology for 19 years to 1990. She remained an active member of the department as an Emeritus Professor, continuing to publish and lead the completion of the Corpus of Anglo-Saxon Stone Sculpture in her last years. The University has placed a tribute to her on its website at [Professor Dame Rosemary Cramp - Durham University](https://www.durham.ac.uk/heritage/rosemary-cramp).

## **JEAN MELLOR**

We are also sorry to inform you of the death of pioneering Leicestershire archaeologist, Jean Mellor, who died on 25 May 2023, following a long illness. Jean was appointed as an archaeologist by Leicester Museums around 1965, and is well known for directing many excavations in the city, including the Forum and Mithraeum sites (both in St Nicholas Circle), and the Austin Friars. Later, in the mid 1970s she became Senior Field Archaeologist and managed Leicestershire Museums Archaeological Field Unit, (later Leicestershire Archaeological Unit, LAU) until its closure in 1995. LAU undertook many excavations in both the city and county of sites under threat from development, quarrying, road schemes or plough damage. Notably, these included the Shires and Norfolk Street sites in Leicester, the Bronze Age barrows at Sproxton and Eaton, Iron Age settlement at Enderby and the medieval bridges at Hemington, among many others. Jean was also a member of the LAHS Committee and contributed many reports to *Transactions*. These can be identified at [prelims 1..10 \(le.ac.uk\)](https://www.le.ac.uk/~leahs/prelims1-10). We would like to thank Terry Pearce for this account of Jean's work.

## **OTHER NEWS**

### **FREE ONLINE GUIDEBOOK – LITTLE-KNOWN LEICESTERSHIRE AND RUTLAND**

The first edition of Bob Trubshaw's guidebook *Little-known Leicestershire and Rutland* was published in 1995, and a second edition in 2010. Both are out of print, but the book is now available as a free PDF on his website at [Heart of Albion Press \(hoap.co.uk\)](https://www.heartofalbiopress.co.uk/).

### **GREATER WIGSTON HISTORICAL SOCIETY (GWHS) – FREE ONLINE PUBLICATIONS**

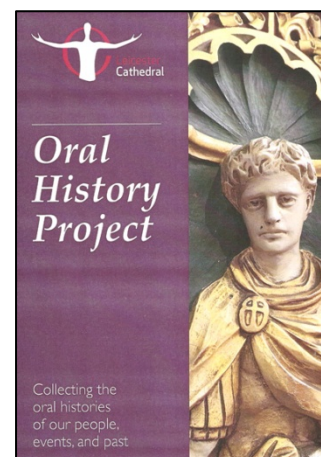
Several books on Wigston and South Wigston by Tony Danvers are available to download free of charge as PDF files on the website of the Greater Wigston Historical Society at [Tony Danvers Books \(wigstonhistoricalsociety.co.uk\)](https://www.wigstonhistoricalsociety.co.uk/). They are *South Wigston Businesses Past and Present*; *Wigston Businesses Past and Present*; *South Wigston Streets Past and Present*; *Wigston Streets Past and Present*; and *Photographic Memories of the Old Wigston Stations*. Click on the image of each book to access it. GWHS also has its own Heritage Centre in partnership with the Wigston Academy Trust on the Wigston College Campus, off Station Road, Wigston, LE18 2DS. Archival material covering Wigston, South Wigston, Glen Parva and Kilby Bridge can be viewed there free of charge during its opening hours. See [www.wigstonhistoricalsociety.co.uk](https://www.wigstonhistoricalsociety.co.uk/) for more information.

## GREEN PLAQUES – LEICESTERSHIRE COUNTY COUNCIL

Leicestershire County Council's Green Plaque scheme has now closed after six rounds of awards marking people and sites of historical significance. The final plaque honours George Fox, founder of the Quaker movement, and will be unveiled in Fenny Drayton on 15 June 2023. For a full list of plaques to date, along with images, go to [Green Plaques unveiled across Leicestershire](#).

## LEICESTER CATHEDRAL ORAL HISTORY PROJECT

Rebecca Hale writes that Leicester Cathedral is currently closed for an ambitious restoration and building project entitled 'Leicester Cathedral Revealed'. This National Heritage Lottery Fund (NHLF) supported project will see large scale improvements to the Cathedral interior, while a new heritage and learning centre will provide exhibition and learning space for the community. NHLF-sponsored activity planned during the closure period includes an oral history project. Our existing archive focuses on the history of the Cathedral as a building, with no real sense of the personal, so this project provides ample opportunity for redress. Our initial focus has been on capturing our choir history, which reflects a great choral tradition. Already, an ex-chorister with 65 years choir membership has regaled me with memories of post war royal visits, live radio broadcasts and the founding of the girls' choir. Significantly, when Leicester Cathedral set up its girls' choir in 1974 it was the first English cathedral to do so.



Running alongside this, our project revisits the reinterment of Richard III. Interviews have already been conducted with various project team members and more are scheduled. Members of the Richard III Society are participating, as is the project architect and the creators of Richard's funeral pall, his tomb, his *pietra dura*<sup>1</sup> coat of arms and the stained glass Redemption Windows. It will also include memories from volunteers under the supervision of the Cathedral Volunteer Manager. More names are coming on stream as we navigate this strand of the project, all of which will add to its rich tapestry. Later, the project will capture oral histories focusing on other aspects central to the story of Leicester Cathedral. The material will then be used as material for our website, exhibitions, touch screens and talks, doubtless enhancing our interpretation of the Cathedral's history. Anyone interested in contributing to this project should contact Rebecca Hale on 0116 261 5368 or [Rebecca.Hale@LeicesterCofE.org](mailto:Rebecca.Hale@LeicesterCofE.org).

## TAYLOR'S BELL FOUNDRY, LOUGHBOROUGH

Construction works are now under way at Taylor's Bell Foundry in Loughborough, the last major bell foundry in the UK, to protect and enhance the Grade II\*-listed bell foundry buildings. The foundry was built in 1859 a short distance from Loughborough town centre, and has cast more than 25,000 bells located in buildings in more than 100 countries. They include London's St Paul's Cathedral, the Washington National Cathedral in the US capital, and Australia's National Carillon in Canberra. For further information see [Work gets underway to save UK's last major bellfoundry - Latest News - News Updates - Charnwood Borough Council](#).

---

<sup>1</sup> A technique using highly polished stones to create images.



### **'REBUILDING LIVES' EXHIBITION WINS NATIONAL AWARD**

The exhibition *Rebuilding Lives: 50 Years of Ugandan Asians in Leicester* won an award as one of two best Temporary or Touring Exhibitions at the recent Museums and Heritage Awards. The exhibition told the stories of families expelled from Uganda by dictator Idi Amin, to mark 50 years since Ugandan Asians began arriving in Leicester. It attracted more than 167,000 visitors at New Walk Museum and Art Gallery and was also hosted by Charnwood Museum in Loughborough. See [Leicester Ugandan Asian exhibition wins national award - BBC News](#) for more details.

### **LEICESTER CITY MUSEUMS**

A new national touring exhibition, 'Heart of the Nation: migration and the making of the NHS', will be opening at New Walk Museum and Art Gallery in Leicester on 30 June to mark the 75<sup>th</sup> anniversary of the National Health Service. The exhibition, by the Migration Museum in London, 'shines a light on the stories and experiences of people who have come to Britain to work in the NHS through photography, film, oral histories and an immersive experience that brings together singing and storytelling. It will be accompanied by a series of workshops and events. For more details, see [Event Details – Leicester Museums](#).

### **LEICESTERSHIRE MUSEUMS**

#### **HALLATON HELMET TO BE RECREATED**

Leicestershire County Council Museums, Hallaton Museum and LAHS are extremely pleased to announce the start of an exciting new project to recreate the Hallaton Helmet, part of the Hallaton Treasure. LAHS has made a generous grant to enable a local and renowned silversmith to recreate the helmet as it would have appeared when worn by a Roman cavalry officer, 2000 years ago, prior to its burial at the Late Iron Age ritual site at Hallaton in the AD40s/50s. Two replica helmets will be created for display – one each for Harborough and Hallaton Museums. Work is currently under way to re-assess the decorative elements of the helmet bowl and the cheekpiece that belonged to it. This close analysis by staff at Leicestershire Museum Collections, archaeological illustrator Debbie Miles and volunteer/art historian Teresa Porciani, has already identified new iconographic elements of the intricate and elaborate design.



The LAHS grant will add to funding already secured from the Association of Roman Archaeology. The project is part of a much larger piece of work to re-display and re-interpret the Hallaton Helmet assemblage, following the transfer of the complete finds archive to Leicestershire in February 2020 after the completion of an 18-year conservation programme by British Museum conservators. It is hoped that the replicas and displays will be ready to wow visitors from early 2024.

Helen Sharp, Archaeology Curator, Leicestershire County Council Museums

Image: The real Hallaton Helmet ©Leicestershire County Council Museums

## ARCHAEOLOGY

### UNIVERSITY OF LEICESTER ARCHAEOLOGICAL SERVICES (ULAS)

Gavin Speed sends this update on the work of ULAS: Over April and May ULAS have been busy excavating a 1ha area on the south-east edge of the village of Great Easton, in advance of a small residential development. The earliest evidence uncovered is from the



Roman period, with a corn dryer and ditches and pits. Most of the evidence consists of numerous medieval ditches aligned and perpendicular to the road, along with various small pits. The images [courtesy of ULAS] show a medieval pot in situ and the team at work. The stone foundations for an early 19<sup>th</sup> century Independent Chapel, demolished by 1900, were also discovered.

### FORTHCOMING EVENTS

#### LEICESTERSHIRE AND RUTLAND FAMILY HISTORY SOCIETY (LRFHS) – LEICESTER GROUP

For further information and bookings - [LRFHS - Upcoming Events](#). For details of meetings of the Hinckley, Loughborough, Market Harborough and Rutland groups, see [LRFHS - Meetings](#).

**14 June 2023, Stoneygate Baptist Church, London Road, Leicester, LE2 3ND, 7.30 pm**

***The History of Leicester's Cinemas***

Brian Johnson

**12 July 2023, Stoneygate Baptist Church, London Road, Leicester, LE2 3ND, 7.30 pm**

***Secrets Never to be Told***

Fiona Chesterton

#### LEICESTER CIVIC SOCIETY (LCS) – GUIDED WALKS

Walks cost £5 for members and £6 for non-members. Bookings and payment via LCS website at [All Events - Leicester Civic Society](#).

**Saturday 17 June 2023, starting 10.30 am from Charnwood Primary School, corner of Nedham Street and Upper Charnwood Street – duration 2 hours**

***Charny and North Highfields***

Led by Peter Kilty

**Saturday 8 July 2023, starting at statue of Robert Hall, De Montfort Square, Leicester, finishing at 12.30 pm at Victoria Park**

***West of New Walk***

Led by Neil Crutchley

### NEWARKE HOUSES MUSEUM

For further details, telephone 0116 225 4980 or email [museums@leicester.gov.uk](mailto:museums@leicester.gov.uk); visit [Whats On – Leicester Museums](#) to book.

**Sunday 25 June 2023, 2 pm, £5**

***Civilian life in World War I***

Philip French, former Curator of Social History

**Sunday 3 September, 2023, 2pm, £5**

***The Story of Palitoy: from an old building site to a galaxy far far away***

Bob Brechin, former Chief Designer

### LEICESTER CATHEDRAL WALKING TOUR

**Saturday 24 June 2023**

Starting at the Cathedral Welcome Desk in St Martin's House at 2pm, the tour will take in various external aspects of the building, the site of the Greyfriars Friary and the discovery of Richard III, and then wander through Castle Gardens, ending with a short tour of the church of St Mary de Castro. Tickets £5 per adult. Booking essential through Eventbrite - [Walking Tour – Leicester Cathedral](#).

## RURAL LIFE PAST AND PRESENT

### Out-of-Print and Difficult-to-Find Books

Local history, rural and agricultural history, recollections, country characters, farming reminiscences, canals, folklore, traditions and customs, rural occupations and skills, rural architecture, including wind and water mills, country living in the past, Gypsies and other Travellers, etc.

Established 1970. Extensive stock. Free catalogues, postal only.

COTTAGE BOOKS,  
THE COTTAGE, REMPSTONE ROAD  
GELSMOOR, COLEORTON,  
LEICESTERSHIRE  
LE67 8HR

e-mail [jenny@boyd-cropley.co.uk](mailto:jenny@boyd-cropley.co.uk)

### FRIENDS OF THE CENTRE FOR ENGLISH LOCAL HISTORY – HOSKINS DAY 2023

**Saturday 1 July 2023, Attenborough Lecture Theatre 1, University of Leicester, 1.30 pm**

***By 1350 ... nearly every line was drawn': new light on Devon's landscape history, 70 years after Hoskins' Devon***

Professor Sam Turner, Co-Director of the Newcastle University Centre for Landscape

Tickets are free for members of the Friends and University of Leicester students and staff; £5 for non-members, and can be booked through Eventbrite at [Hoskins Day Tickets, Sat 1 Jul 2023 at 01:30 | Eventbrite](#). While on campus, attendees might also like to see the new exhibition 'The Attenboroughs at Leicester' in the David Wilson Library (open 9:30 am to 4:30 pm). This includes documents, photographs, objects and audio-visual material relating to the Attenboroughs' daily lives during their time at Leicester, and includes a new oral history interview with Sir David Attenborough. Ask for admission at Library Reception.

### HOLY TRINITY CHURCH, BARROW ON SOAR

**Church Street, LE12 8HP, Saturday 1 July 2023, 6 pm**

Holy Trinity Church at Barrow on Soar is celebrating the centenary of its memorial chapel with a talk by Richard Hudson on the history of its creation and the symbolism of its design. Everyone is welcome, but it may be of particular appeal to those with an interest in World War I history, art history, and church history.



## **GODDARDS OF LEICESTER: GEOFF BRANDWOOD MEMORIAL VISIT** **Saturday 1 July 2023, 9.30 am – 5 pm, £55**

This special tour by the Victorian Society will explore the architectural legacy of the Goddard family, the leading architectural practice in Leicester throughout the second half of the 19th century. It will start at Market Harborough, where a coach will take participants to the village of Tur Langton to visit St. Andrew's Church, designed by Joseph Goddard. It will go on to Leicester to explore St. John the Baptist, Clarendon Park, the former Stoneygate School, and St. James the Greater church. It will next visit Melbourne Hall Evangelical Free Church and St. Barnabas, and then make its way to the city centre for a walking tour of the Goddards' commercial buildings.

The tour is a tribute to the late Geoff Brandwood, Chairman of the Victorian Society (2001-2007), in recognition of his contribution to the Society and to architectural history. Geoff co-wrote a history of the Goddard practice with Martin Cherry: *Men of Property – the Goddards and six generations of architecture*. Bookings through Eventbrite at [Goddards of Leicester: Geoff Brandwood Memorial Visit Tickets, Sat 1 Jul 2023 at 09:30 | Eventbrite](#).

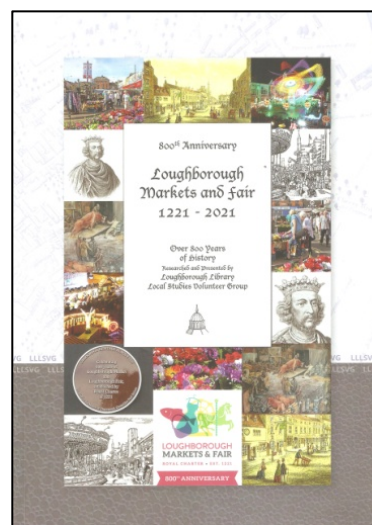
## **RECENT PUBLICATIONS**

### **LOUGHBOROUGH MARKETS AND FAIR 1221 – 2021: OVER 800 YEARS OF HISTORY**

Loughborough Library Local Studies Volunteer Group; ed. Kathy Phillips  
Loughborough Library Local Studies Volunteer Group, 2022, 120pp, illus, £9.99

This very comprehensive history marks the 800<sup>th</sup> anniversary of the Royal Charter granted by King Henry III for a market and fair in Loughborough. It is based on the historical research conducted by Loughborough Library Local Studies Volunteer Group (LLLSVG) for an exhibition at Charnwood Museum, which opened to the public in July 2021. The opening sections provide useful context about the origins of markets and fairs, and the development of Loughborough itself in the period before the grant of the Charter – which followed a request from the inhabitants themselves. Goods sold at the market over the following centuries included those brought by traders from Europe as well as surplus local produce and animals for exchange and butchering.

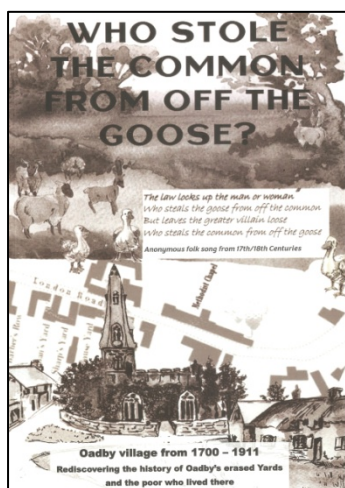
In the 19<sup>th</sup> century Loughborough's November Fair was also an occasion for hiring farm workers, and was later transformed into a pleasure fair with stalls, booths and 'mechanical wonders' such as Proctor's cinematograph – but its expansion over the years did not pass without complaints about congestion in the streets, particularly when it began to fill the Market Place in the 1960s. There is much more of interest here, including a section on market rules and regulations, and changing methods of doing business. The historical text is accompanied by many images, with particularly helpful commentaries explaining how and why changes took place in the Market Place. Each chapter has its own bibliography, demonstrating the historical knowledge and expertise that members of LLLSVG have brought to this important, very informative and accessible history of Loughborough's markets and fairs.



## WHO STOLE THE COMMON FROM OFF THE GOOSE?: OADBY VILLAGE FROM 1700 – 1911 – REDISCOVERING THE HISTORY OF OADBY'S ERASED YARDS AND THE POOR WHO LIVED THERE

Bill Davice

The author, 2022, 95pp, illus, limited edition for non-commercial distribution only



The title of this book is taken from a 17<sup>th</sup>/18<sup>th</sup> century folk song protesting against the effects of the enclosure movement in England, reflecting Bill Davice's argument that 'prevailing philosophies of privilege led to actions that embedded poverty' in the village of Oadby – including that of his own family whose own history is briefly recounted. One consequence was the poor housing in which many inhabitants lived, commonly known as the 'Yards'. They have long since gone, but the chapter on 'Putting the Yards back on Oadby's map' identifies 23 of them named in Census returns from 1841 and 1901, among them Bettoney's Yard, Workhouse Yard and Club Yard. As the author suggests, the redrawn maps based on the Census, along with transcripts of the returns themselves, will be

particularly useful to anyone researching their own ancestors. The search for the Yards, and what is known about their owners, occupies most of the first part of the book, alongside background information about the lives of those living there - some of it drawn from school Log Books.

Part 2 focuses on the 'hidden history' of Oadby's poor, analysing the nature of rural poverty in the 18<sup>th</sup> and 19<sup>th</sup> centuries in the wider international and national context, and what the author describes as 'the criminalisation of poverty' by the Poor Law Amendment Act of 1834. The landowners who wielded power in Oadby in the 18<sup>th</sup> century are also considered, along with the process of enclosing Oadby's 'open and common fields' between 1759 – 1761, subsequent 'patterns of enrichment and impoverishment', and a later survey of the links of framework knitting to both. This is an imaginative and engaging approach to the history of Oadby, offering new insights into the lives of its poorer residents, the impact on their lives of wider economic and social movements in the 18<sup>th</sup> century and beyond, and in the author's own case, the extent to which these can intersect with the history of one particular family.

### LOUGHBOROUGH'S PUBS – ADVANCE NOTICE OF A NEW PUBLICATION

Lynne Dyer continues her series of Amberley publications with *Loughborough Pubs*, which promises 'a fascinating journey through the town's watering holes, many of which have retained features and traditions of previous ages'. As a market town located on major transport routes, Loughborough has historically offered visitors and inhabitants a large number of drinking establishments, from pubs and taverns to coaching inns, post-houses and beer or ale houses. Among them was the Loughborough Arms in Baxter Gate, originally a coaching inn on the Earl of Moira's land known as the Rose and Crown, which was also used as a venue for land and property auctions, inquests, and an annual celery show. The book is due for publication in November 2023, but can be pre-ordered at a reduced price at [Loughborough Pubs - Amberley Publishing \(amberley-books.com\)](https://www.amberley-books.com), where further details of the contents can also be found.

## A HISTORICAL FOOTNOTE

Something a little different this time, from *Bell's Standard Elocutionist: principles and exercises* (Hodder and Stoughton, 1896. Elocution was not just a matter of clear and correct formal speech, but of conveying meaning and emotion – as this diagram illustrates.

Should you wish to try out the gestures, here is an extract from one of the many items of poetry and prose on which readers were invited to practise.

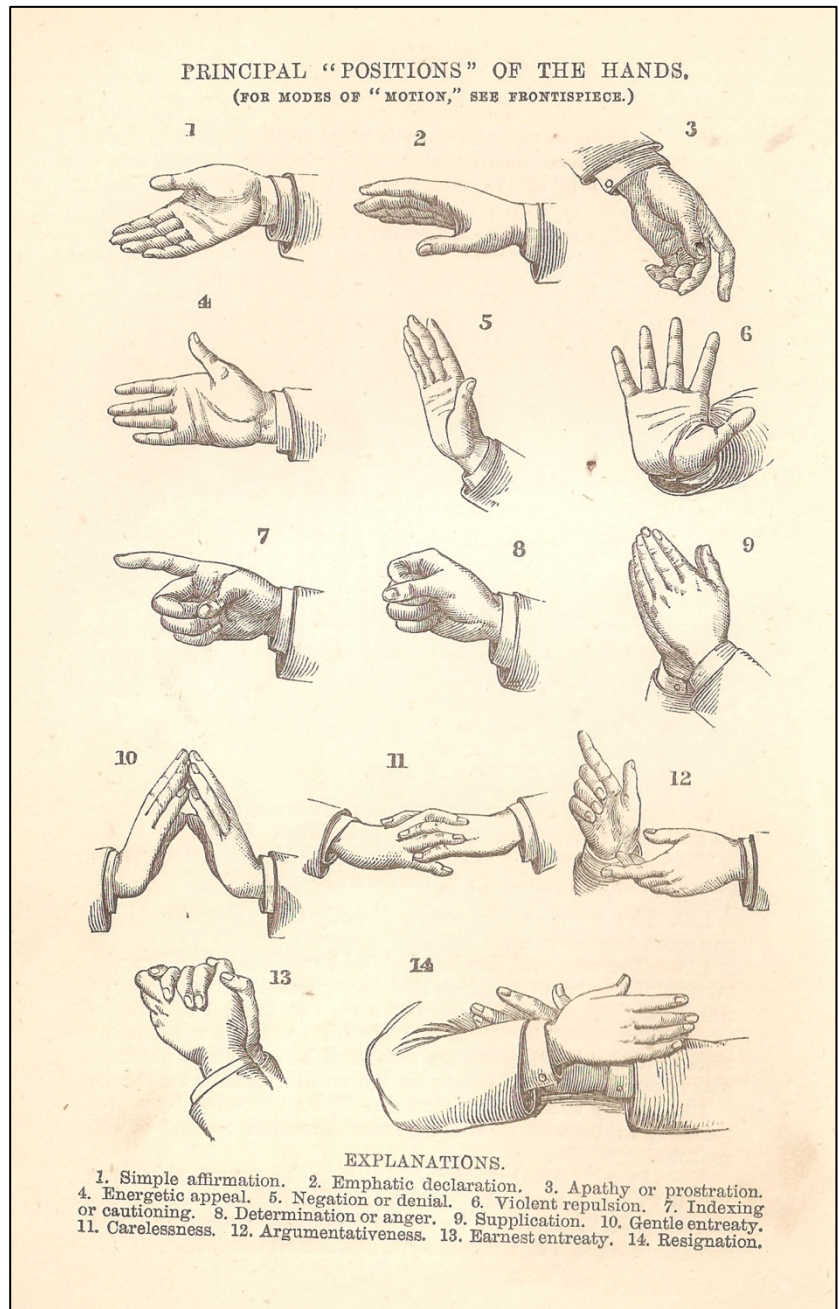
Many were about battles, heroic knights and shipwrecks, but here is one from the 'Humorous' section.

A PARENTAL ODE TO MY SON,  
AGED THREE YEARS AND FIVE MONTHS

Thou happy, happy elf! (but stop – first let me kiss away that tear) – thou tiny image of myself! (my love, he's poking peas into his ear!), thou merry, laughing sprite!

With spirits feather-lite,  
untouched by sorrow, and  
unsoiled by sin – (good heavens! The child is swallowing a pin!)...

THOMAS HOOD



This newsletter is edited by Cynthia Brown and published by Leicestershire Archaeological and Historical Society. Further information about the Society, its publications and other activities can be found on its website at [www.lahs.org.uk](http://www.lahs.org.uk).

**THE LEICESTERSHIRE ARCHAEOLOGICAL &  
HISTORICAL SOCIETY**  
THE GUILDHALL, GUILDHALL LANE, LEICESTER. LE1 5FQ.  
Registered Charity No 503240

President:  
*Patrick Boylan*

Mr. Matthew Beamish,  
Hon. Membership Secretary LAHS,  
c/o ULAS,  
School of Archaeology and Ancient History,  
University of Leicester, University Road,  
Leicester LE1 7RH  
Tel 0116 2525234  
Email: membership@lahs.org.uk

**Membership Form**

**Categories**

- Individual Membership      £30
- Family Membership          £40
- Student Membership         FREE\*

Surname:..... Forename:..... Title:..... Initials:.....

Address: .....

.....

.....

Post Code:..... Telephone:.....

Email Address:.....

*(Only to be used for communicating information with members. \*Student membership is contingent upon you providing the email address given to you by your educational institution).*

I wish to become a member at the rate indicated above.

I enclose a cheque/ I have paid by Paypal/ I have made a Standing Order arrangement with my bank/Please send me a Standing Order form *(delete as applicable)*.

*If paying by Standing Order please either make your own arrangement with your bank/building society, or request a form from Hon. Mem. Sec. Please make any payments to Sort Code 60-60-06, Account Number 87270080.*

*Alternatively pay by Paypal: Payments@lahs.org.uk*



**Data Protection Act**

I/We agree to my/our names being stored on a computer database

Signature/s:..... Date:.....

**Gift Aid Declaration**

Please treat as Gift Aid donations all qualifying previous and/or future subscription payments and/or donations I have made to LAHS (delete as applicable). I confirm I have paid or will pay an amount of Income Tax and/or Capital Gains Tax for each tax year (6 April to 5 April) that is at least equal to the amount of tax that all the charities or Community Amateur Sports Clubs (CASCs) that I donate to will reclaim on my gifts for that tax year. I understand that other taxes such as VAT and Council Tax do not qualify. I understand that LAHS will reclaim 28p of tax on every £1 that I gave up to 5 April 2008 and will reclaim 25p of tax on every £1 that I give on or after 6 April 2008.

Surname ..... Title:..... Initials:.....

Address .....

.....

Postcode .....

Signature/s .....

Date:.....