

THE LEICESTERSHIRE
ARCHAEOLOGICAL & HISTORICAL SOCIETY
THE GUILDHALL · LEICESTER · LE1 5FQ



NEWSLETTER 104 Autumn 2019

Welcome to the latest edition of the LAHS Newsletter. Contributions to future editions are welcome at any time. Send them to the editor, Cynthia Brown, at newsletter@lahs.org.uk or by post c/o Honorary Librarian, Leicestershire Archaeological and Historical Society, The Guildhall, Guildhall Lane, LE1 5FQ.

LAHS NEWS

LECTURE PROGRAMME

The lecture programme for 2019 – 20 is now confirmed and set out below. All lectures take place at New Walk Museum, and start at 7.30 pm, with the exception of the LAHS AGM and the 'Iceman' lecture (see below). To ensure sufficient space for everyone attending, lectures at New Walk Museum will be held in the Victorian Gallery. Please use the main entrance to the Museum on New Walk, and arrive in good time to avoid disruption once the lecture has started.

Thursday 26 September 2019

Scarborough Lecture

The monks of Peterborough Abbey and their history

Professor Edmund King, Emeritus Professor of Medieval History, University of Sheffield

Thursday 21 November 2019

'Otzi': the life, death and environment of a prehistoric glacier mummy

Lecture Theatre 1, George Davis Building, Centre for Medicine, University of Leicester

Professor Klaus Oeggl, University of Innsbruck

Organised jointly by LAHS with the Leicestershire Fieldworkers and the Prehistoric Society.

Tickets are free but must be booked in advance through Eventbrite:

<https://www.eventbrite.co.uk/e/otzi-a-prehistoric-alpine-glacier-mummy-tickets-71893329885>

If you are unable to book via Eventbrite please contact the Fieldworkers who will book tickets for you info@leicsfieldworkers.co.uk.

Tuesday 26 November 2019, The Guildhall, Guildhall Lane, Leicester

164th LAHS Annual General Meeting, followed by

The Shirleys, their recusancy and their monuments

Moira Ackers, member of the Church Monuments Society

Please note that this is a TUESDAY due to Cathedral bell-ringing on Thursdays.

Thursday 5 December 2019

Viking Lincolnshire

Dr Erik Grigg, Bishop Grosseteste University, Lincoln

Thursday 9 January 2020

The actions of the 2nd Battalion Leicestershire Regiment in Mesopotamia

Nigel Atter, Leicester, Leicestershire & Rutland Branch, Western Front Association

Thursday 6 February 2020

Lutterworth in the later Middle Ages – a successful small market town

Dr Andrew Watkins, Centre for English Local History, University of Leicester

Thursday 27 February 2020

Members' evening

If you would like to present the results of your research to fellow members, please contact the Hon. Lecture Secretary, Yolanda Courtney by email at lectures@lahs.org.uk or by phone on 0116 2120271.

Thursday 5 March 2020

The Alan and Joan North Memorial Lecture

Experiencing the catacombs: from Roman burials to early medieval pilgrims

Professor Neil Christie, School of Archaeology & Ancient History, University of Leicester

Thursday 26 March 2020

The archaeology of domestic innovation in country houses

Professor Marilyn Palmer, School of Archaeology & Ancient History, University of Leicester

Thursday 30 April 2020

The real King Arthur: a sixth century North British hero

Professor Andrew Bruce, University of Navarre, Pamplona

Thursday 21 May 2020

The Hallaton Treasure: typical rituals?

Dr Frank Hargrave, Colchester and Ipswich Museums

LAHS HISTORY FAIR 2020 – A DATE FOR YOUR DIARY

LAHS will be holding its popular History Fair at Beaumanor Hall, near Loughborough on Sunday 31 May 2020. Further information will follow as arrangements proceed.

NEWS FROM THE LIBRARY

BEQUESTS

The Society has received books, pamphlets and periodicals from the estates of several people and we are most grateful to their families for thinking of the Library.

Terence Cocks, known to many as Terry, died in the autumn of 2018. He was a local historian, an author, and a member of the Society. He was a Lay Canon of Leicester Cathedral and its Honorary Archivist. His publications are in the Library:

A cathedral for Leicester. 2001.

50 years – 13 centuries. 1976. (with P. Lloyd) Reviewed in Trans. Vol. 51.

Leicester's royal foundation: the Hospital of the Holy Trinity. 1997.

ALSO 2nd ed. 2013. Trinity Hospital...

Past and present: a brief history and description of the church of St. Mary Magdalene, Knighton. 1965. ALSO 2nd ed. 1971, 3rd ed. 1990.

He also contributed papers to:

- Leicestershire Historian 2004 A murderer pardoned and a judge defied; An unusual marriage ceremony
2005 Medieval grave-slabs from Leicester Cathedral
2006 Survival from Georgian Leicester: no.17 Friar Lane
Transactions Vol. 58 1982-3 Last Abbot of Leicester
Vol. 67 1993 Archdeacons of Leicester 1092 – 1992

Mrs. Felicity Cocks, Terry's widow, has kindly donated the following from his extensive library:

- BANKS, M. John Bold of Stoney Stanton (1679 – 1751). [200-]
BRIGGS, N. John Johnson 1732 – 1814: Georgian architect... 1991
BROWN, V. Reaching out: St. Mary Magdalene with St. Guthlac [Knighton]... 1978
CLOUGH, T. Horseshoes of Oakham Castle. 3rd ed. 1999
MACNUTT, F. Early diocese of Leicester. 2nd ed. 1927
PRUETT, J. Parish clergy under the later Stuarts: the Leicestershire experience. 1978
SAUNDERS, E. Joseph Pickford of Derby: a Georgian architect. 1993
STEPHENS, J. ed. Aspects of Burton Overy. 2000
TEGG, H. Religion in Victorian Leicester. 2006
Wanlip. Our Lady & St. Nicholas. 2nd ed. 2009 [2011 rep.]

Perhaps the most important acquisition is the file of a journal to which the Society has never subscribed:

- Church Monuments: journal of the Church Monuments Society Vol.1 pt.1 1985 – Vol. XXXII 2017
ALSO published Indexes: Vol. I – X 1985 – 1995
XI – XX 1996 – 2005
XXI – XXX 2006 – 2015

These facilitate the retrieval of various Leicestershire and Rutland references. The most recent issue (XXXII 2017) includes Shirley monuments at Breedon on the Hill. Some issues in the file are enhanced with notes by Terry. Finally: Church Monuments Society Newsletter Vol. 20 no. 2 Wint. 2004/5 (a single issue) includes a report on St. Mary's, Bottesford.

Nigel North has donated the following from the estate of his mother Joan, one-time Vice-President of the Society:

- HOSKINS, W. Leicestershire: an illustrated essay on the history of the landscape. 1957
Leicester blitz souvenir. [194-]
Leicester of the future. [1946]
Leicestershire county handbook. [1962]
NASH, D. & REEDER, D. eds. Leicester in the twentieth century. 1993
WADE-MATTHEWS, M. Grave matters: the story of the first fifty years of the Welford Road Cemetery, Leicester... 2nd ed. 1995 (with ms. additions by Joan).

Albert Herbert, architect, died in 1964. For information on his contribution to the Society see RUTLAND 'Leicestershire Archaeological and Historical Society 1855 – 2005' (2006) and the 'Index to Transactions' (2005). His grandson Dr. Tony Herbert lives in Cork and has donated:

- FARNHAM, G. & THOMPSON, A. St. Bartholomew's church Quorndon. 1931 (rep. from Trans._1930)
HOSKINS, W., ed. Studies in Leicestershire agrarian history. 1949. This duplicate copy contains a ms. letter and is inscribed to a relative of Sir Alfred Herbert.

BOOKS and PAMPHLETS added to stock, published in 2019 unless otherwise indicated

Brief guide to St. Mary's Humberstone. n.d.

BROWN, C. History of Leicester's allotments. 2018. Donated by the author, our Newsletter Editor.

CAVILL, P. New dictionary of English field-names. 2018. This draws on material prepared by John Field, who lived in Uppingham and then Evington. John died in 2000 (obit. Rutland Record 20 2000). His MA dissertation was on Gartree Hundred field-names and he was the author of English field names: a dictionary (1972), History of English field-names (1993), Rutland field-names (Rutland Record 1 1980) and compiled an Index to Rutland Record 1 – 10 (1980-1990) (1994).

Chelmsford [Essex] industrial trail. rev. ed. 2018. Complimentary copy from Essex Society for Archaeology & History.

DYER, L. Secret Loughborough. Donated by the publisher.

FINN, N. Bronze Age ceremonial enclosures and cremation cemetery at Eye Kettleby: the development of a prehistoric landscape. [2011]. Donated by the publisher ULAS.

KNAPP, S. Mods: two city connection: memories of the 1960s Leicester and Nottingham mod scene.

MALTBY, G. & LOUITIT, A. Theodora Salusbury 1875 – 1956: stained glass artist. 2018. Salusbury's home county was Leicestershire where there are many of her windows.

MILSOM, M. Bells and bellfounding: a history, church bells, carillons, John Taylor & Co. bellfounders. 2nd rev. 2018. (first pub. 2017).

MUDDIMER, T. Childhoods are forever. 2018. Donated by the author of this young boy's life in Leicester 1936-45.

OADBY REMEMBERS 1914-18 PROJECT Oadby remembers 1914-18: a village honours its servicemen of the Great War. Donated by the Project.

SATO, K. Life story of Dr. Dorothy Francis MBE: an African-Caribbean business woman in Leicester. Donated via Cynthia Brown by the author, Meiji University, Japan.

SCORE, V. Hoards, hounds and helmets: a conquest-period ritual site at Hallaton. 2011. Donated by the publisher ULAS.

SCREATON, B. Thurnby Court: the story of an extravagant but short-lived Leicestershire mansion. 3rd ed. 2018. Donated by the author.

S.P.A.B. Annual review 2018.

STREET, R. Daniel Lambert picture book: Daniel Lambert 1770 – 1809: England's sporting colossus.

PERIODICALS - a selection

Ashby-de-la-Zouch Past & Present 21 Articles on Ashby, Coleorton, World War II evacuees. Donated by the Editor.

British Archaeology Jul/Aug 2019 includes report on Leicestershire's Iron Age bark shield and an interesting photograph of Matt Beamish, LAHS Membership Secretary, with an axe!

East Midlands History & Heritage 8 Jan 2019 Articles include Leicester's Clarendon Park in the Great War, by Joe Hall (LAHS), Effect of the First World War on Mountsorrel Quarry, Leicestershire's contribution to saving the nation from starvation.

Hinckley Historian 83 Summer 2019 includes Lindley Hall, Aston Flamville, pawnbrokers in Hinckley, Wills & Son – printers. Donated by Hinckley & District Museum.

SPAB Magazine Spring 2019 'Path Notes' has a brief reference to the gardener's cottage at Beaumanor in 1919.

NEWSLETTERS - current copies only

Friends of Welford Road Cemetery Leicester Newsletter Feb 2019 includes Crockett family of Leicester.

SPAB Regional Events Spring 2019 includes a report on visit to Taylor's Bellfoundry.

EXCHANGE JOURNALS

For many years the Society and Cambridge Antiquarian Society (CAS) have exchanged our annual journals. For a variety of reasons, at the request of CAS this arrangement has now ceased, so no further copies of its Proceedings will be received. The Library file is from Vol. 3 1865 – 107 2018, plus 11 volumes of other publications of varying dates 1853-69 – 1942. The Proceedings of the Cambridge Antiquarian Society can be accessed online at the Archaeology Data Service **Error! Hyperlink reference not valid..**

AND FINALLY...

Local antiquarian bookseller Jenny Boyd-Cropley, Cottage Books, is now sending copies of her catalogues, and the most recent copies are available for reference in the Library. They always contain Leicestershire and Rutland books, so please do visit to see them if you are interested in rural life.

Aubrey Stevenson, Hon. Librarian.

OTHER NEWS

GREEN PLAQUE SCHEME – LEICESTERSHIRE COUNTY COUNCIL

Leicestershire County Council's Green Plaque scheme aims to honour people and places of historical importance across the county. Candidates are nominated and voted for by members of the public. The most recent Green Plaque was unveiled at Kibworth Beauchamp in June 2019, and commemorates John T. Kenney, the artist who illustrated six books in Reverend W. Awdry's famous series, *Thomas the Tank Engine*, between 1957 and 1962. Kenney was a graduate of the Leicester School of Art, and also painted many rural and sporting landscapes. The plaque is located on the site of his former home on Smeeton Road, Kibworth. There will be a further round of nominations in the future – details to follow. LAHS is represented on the Green Plaque short-listing panel by Cynthia Brown, pictured on the right at the unveiling.



FORTHCOMING EVENTS

LEICESTER URBAN OBSERVATORY

Sunday 29 September 2019, 2.30pm, King Richard III Visitor Centre, St Martin's, Leicester
Secrets of the Leicester Blitz Revealed

Austin Ruddy

For further details of this and other events, email leicesterurbanobservatory@gmail.com.

HERITAGE SUNDAYS – LEICESTER

Blue Badge guided tours of The Magazine, Castle Great Hall, Trinity Chapel and the ruins of the Church of the Annunciation, on the last Sunday of the month. One building, £3; two buildings, £5; or all sites for £7.80. Booking essential through Visit Leicester, 0116 299 4444, or in person at 51 Gallowtree Gate.

LEICESTER CIVIC SOCIETY – GUIDED WALKS

Booking is essential for these walk, direct to Leicester Civic Society Events at 105 Letchworth Road, Leicester, LE3 6FN; or through Visit Leicester, Gallowtree Gate, Leicester, tel 0116 2994444 or in person. Cheques where applicable are payable to 'Leicester Civic Society'. Full details of Civic Society activities can be found at www.leicestercivicsociety.org.uk/.

Saturday 21 Sept 2019, 10.30 am, starting at Belmont House Hotel, New Walk, Leicester
Leafy Leicester

CIVIC SOCIETY FREE GUIDED WALK FOR HERITAGE OPEN DAYS 2019

The walk will lead you through some of the city's green spaces, taking you along Upper New Walk, Victoria Park and Welford Road Cemetery, as well as focusing on some fascinating buildings. Two hours. Advance booking is still required – details as above.

Saturday 28 December 2019, 10.30 am, starting at The Guildhall, Guildhall Lane, Leicester
Christmas Ghost Walk: the spirits of Leicester

The walk will be led by Peter Jones and Leigh Moss, who will reveal some ghostly tales associated with historic buildings dotted around the city centre. Cost £4.50, payable as above.

LEICESTER GROUP VICTORIAN SOCIETY

All lectures are held on Tuesdays at Bishop Street Methodist Church, opposite Town Hall Square, Leicester at 7.30 pm. Meetings are open to all, but attendees are asked to make a contribution of £2.50 per person towards the cost of room hire and other expenses.

1 October 2019

George Eliot and the Bird Grove connection

John Burton

5 November 2019

These we have listed

Peter Ellis

RURAL LIFE PAST AND PRESENT

Out-of-Print and Difficult-to-Find Books

Local history, rural and agricultural history, recollections, country characters, farming reminiscences, canals, folklore, traditions and customs, rural occupations and skills, rural architecture, including wind and water mills, country living in the past, Gypsies and other Travellers, etc.

Established 1970. Extensive stock. Free catalogues, postal only.

COTTAGE BOOKS,
THE COTTAGE, REMPSTONE ROAD
GELSMOOR, COLEORTON,
LEICESTERSHIRE
LE67 8HR
e-mail jenny@boyd-cropley.co.uk

WESTERN FRONT ASSOCIATION, LEICESTERSHIRE AND RUTLAND BRANCH

Meetings are held at the Elms Social and Service Club, Bushloe End, Wigston, LE18 2BA at 7.30 pm. For further details of the Association's activities, including the Branch Newsletter, *The Tiger*, see www.leicestershireandrutlandwfa.com/2015speakerprogramme.asp.

28 October 2019

'Untidy Ending to the War' - the Inter-Allied Commission in Teschen, 1919

Dr Jim Beach

25 November 2019

Legacies of the First World War - building for Total War, 1914-1918

Dr Paul Stamper

WIGSTON CIVIC SOCIETY

Thursday 26 September 2019, Age UK, Paddock Street, Wigston, Leicester, LE18 2AN

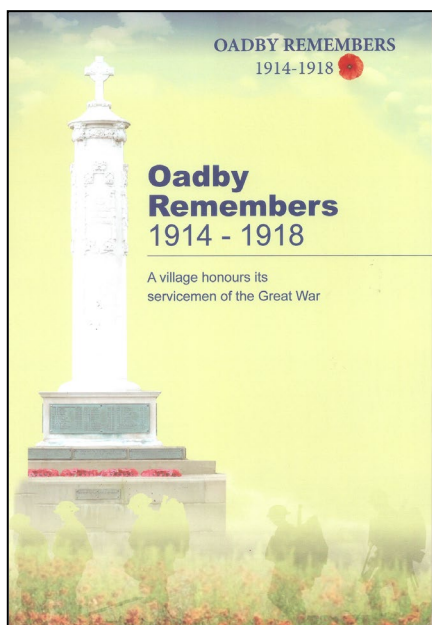
Square Bashing and Kicking Our Heels:

the Royal Leicestershire Regiment and the Glen Parva Depot

Robin Jenkins, Senior Archivist, Record Office for Leicestershire, Leicester and Rutland
Admission £4 per person, including refreshments. Booking advisable - 07813 782 899.

RECENT PUBLICATIONS

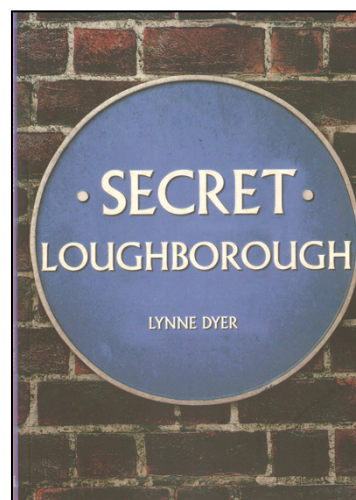
OADBY REMEMBERS 1914–1918: A VILLAGE HONOURS ITS SERVICEMEN OF THE GREAT WAR



This publication is the culmination of a five year project by volunteers to commemorate the Oadby men who fell during the Great War. All the 83 identified from the village's three war memorials have an illustrated biography covering their family background, education and work before the war, in addition to their wartime service itself. These are arranged chronologically by their date of death, the first casualty being Pte Walter Gregory of the Royal Scots, a Reservist who was recalled to his regiment at the start of the war and died in France on 13 September 1914. Each entry is placed in the context of Oadby's Home Front, as well as the major campaigns and battles of each relevant year. This gives a real sense of the day to day challenges of village life in wartime, from the cancellation of evening postal deliveries in 1916 due to labour shortages, and lighter moments such as a 'comedy football match' in 1917. There are additional sections on the war memorials; Oadby's Conscientious Objectors; the role of the 53rd Remount Squadron in caring for war horses on the Racecourse; and how Oadby readjusted to peacetime conditions. It has been distributed free of charge to descendants of the fallen and those who have helped to compile it, but a limited number of copies are available to the general public. For further information, email info@oadbyremembers.org.uk.

SECRET LOUGHBOROUGH

This well-illustrated volume in Amberley's 'Secret' series focuses on some of Loughborough's lesser-known characters and historical episodes, from the medieval period to the present. A chapter encouraging readers to 'Look Up, Look Down, Look All Around' embraces murals, statues and even railings, along with the beehive plaque on the former Co-op premises in Wood Gate. Intriguing street names – such as Peter Twinn Drive – are also explained, as is the 'accidental' manner in which the Three Tuns pub became the Three Nuns. Luddites, Chartists and the Ancient Order of Druids feature in a section on 'Secret and Not-so-secret Societies, while Loughborough's connections to TV and film prove much more extensive than the use of the Great Central Railway as a set, and *Coronation*



Street's Roy Cropper, played by Loughborough-born actor David Neilson since 1995. Local industries – foundries and bricks as well as the more familiar hosiery, bells, books and chemicals – have also left 'hidden' marks in the form of drain covers and street signs carrying the names of their manufacturers. Loughborough University has a chapter to itself, ranging from its Garden of Remembrance and wall of memorial plaques to the unusual weather vane on top of the Hazlerigg Building. This features in one of several 'Did You Know' boxes that sit alongside the main text. *Secret Loughborough* by Lynne Dyer is published by Amberley, 96pp, ISBN 7981445688244, price £14.99.

WRITE YOUR LIFE STORY

Recording your past... for the future

Everyone is special and has a story to tell - about their childhood, their family, perhaps their experiences of the war years, their education and employment, travels, or coming to terms with all the changes and challenges that life throws up from time to time.

Whether you are starting from scratch, or have already written something, Bound Biographies can work with you to produce a handsomely bound book for your family.

Call Wendy on **01428 643591** or email WendyBB@compuserve.com

LEICESTERSHIRE AND RUTLAND FAMILY HISTORY SOCIETY – FREE ADVICE

Leicestershire and Rutland Family History Society (LRFHS) is now offering free advice and assistance at the Record Office for Leicestershire, Leicester and Rutland to help visitors get started on family history, use records online or address tricky family history problems. Just drop in to the Record Office from 10.30 am – 1 pm on Tuesdays 8 October and 12 November 2019.

LRFHS has five groups that meet at Wigston (Leicester Group), Hinckley, Loughborough, Oakham (Rutland Group), and Market Harborough. Each group organises monthly meetings, with talks on a wide range of subjects related to family history and local history. The Society has a Research Centre at Unit 4B, Pilot House, King Street, Leicester, LE1 6RN, with an area for viewing the Society's extensive range of microfiche data and books. There are also 12

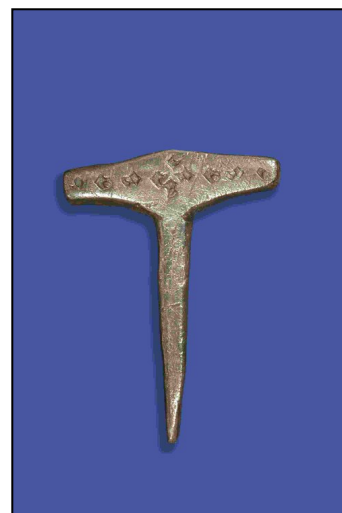
computers available to access information on the internet. More details of the Centre and the talks programme are available at www.lrfhs.org.uk.

OBJECTS ACQUIRED UNDER THE TREASURE ACT

Wendy Scott contributes another in her series of articles celebrating 20 years of the Treasure Act in 2017. Wendy will soon be leaving her post as Finds Liaison Officer for the Leicestershire Portable Antiquities Scheme (PAS), but has kindly agreed to continue her regular contributions to the LAHS Newsletter.

SILVER THOR'S HAMMER

This silver amulet dates to the period AD 850-1100. It would have been worn by a devotee of Thor, one of the main Norse gods alongside Odin and Frey. This was found in Thurgate parish in 1993 by the same person who found our only Viking coin hoard (Thurgate Hoard). At the time it was only the fourth one ever found in England (or at least recorded by archaeologists) and did not qualify as 'Treasure Trove' as it would have been classed as a casual loss. The combination of the implementation of the Treasure Act, the rising popularity of metal detecting, and the common use of precious metal in their construction, means we have now recorded 14 examples, ten of which are silver and one rare [gold example from East Lincolnshire](#). This has similar decoration to the Thurgate example, which remains the only example from Leicestershire.



Such distinct amulets would have been worn as a statement of religious and cultural affiliation, and thanks to them being largely made from precious metal, and therefore protected by the Treasure Act, we are seeing an increasing number of these. We can use them as a layer of evidence for cultural interaction with Scandinavians, or to plot suggested areas of Scandinavian settlement. On that note, it may be significant that the hoard and the hammer were found near Thurgate. The place name has evolved from Thorketill's-tun: a 'Grimston-hybrid' place name which uses a Norse personal name (Thorketill) and an old English place name meaning farmstead/village/estate. It is one of a group of place names in North Leicestershire which provides a layer of evidence for Scandinavian settlement. The hammer was donated to the Museums Service and can be seen at Charnwood Museum (PAS Ref No LEIC-185125), LCC Museums accession number L.A151.1993.0.0.

ARCHAEOLOGICAL NEWS

Jen Browning, School of Archaeology and Ancient History/Archaeological Services at the University of Leicester, reports on the final season of the Bradgate Field School from the end of May to early July. The excavations focused primarily on Bradgate House and took place in the courtyard, the parlour and the guest lodging, building on work from earlier seasons. Flagstone and cobbled floors and a fireplace were exposed in the guest lodging, but there were no earlier structures. The west side of the parlour was excavated to reveal rubble overlying several stone walls, including a cellar or sunken room. The sunken room appeared to post-date a room to the south but was later altered by the addition of a possible base for a chimney. The room contained a later floor of tessellated bricks, associated with the chimney base; while an earlier flagstone floor was probably contemporary with the original room. The structure was eventually completely replaced by the later building.



Two trenches were excavated in the courtyard on either side of a trench from Season 3, which had revealed a stone building. This season a sequence of floor layers were recorded inside the stone building, with the earliest producing fragments from a Tudor green glaze jug. Two stone structures abutted the eastern side of the stone building, sealed by a layer of granite and clay during a later

phase. The first was a stone lined pit, filled with loose rubble, which once removed revealed a large outlet drain at the base. The most plausible interpretation is that it represents a garderobe, which - along with an adjacent chimney base excavated in 2017 - indicates that there was a private chamber on the first floor of the building. The second structure was formed from a wall that was straight externally but curved inside and filled with compact clay, which formed part of its construction. Its position on the corner of the building and its curved form could indicate that it represents a staircase turret.

A brick room on the same alignment was added onto the east side of the stone building. A central brick fireplace with two flue bases, possibly an oven, suggested that the room was domestic. Unfortunately, the remaining internal layers probably post-dated the demolition of the building. The lower deposits had slumped into a large, circular pit, which contained a rich primary fill with oyster shell, animal bone and pottery. On the western side of the stone building there was a substantial open drain constructed out of slate, granite and cobbles, with a central brick channel, which was probably associated with the final occupation of the House during the middle of the 18th century. An in-situ stone pedestal at the same level presumably formed the base of an ornamental structure. The rubble overlying the earlier structures in the trench contained a rich array of artefacts, including a candle holder, a complete inlaid floor tile, and a beautiful medieval pilgrim's badge, depicting the temptation of Adam and Eve. The north wall of the stone building continued along the length of the trench and a section of wall projecting north, suggested that are further undiscovered rooms between the trench and the great hall.

The cumulative evidence shows that the current Bradgate ruins overlie an earlier building complex made of brick and stone, which itself had undergone several modifications before its demolition during the second half of the 16th century. This evidence has a significant impact on the story of Bradgate and its associations with Lady Jane Grey, which will be explored during post-excavation work.



Above left: probable garderobe, with outlet to the rear.

Above right: lead alloy pilgrim badge, one of the Late medieval/Early post medieval finds from demolition layers above earlier stone structures.

A HISTORICAL FOOTNOTE

LAHS was founded in 1855 as the Leicestershire Architectural and Archaeological Society. Here is a report from the *Leicester Daily Post* (13 July 1920) of an interesting contribution by Mr A. Hamilton, its Editorial Secretary, to the debate about which of Leicester's historic churches should become its cathedral when the Peterborough diocese was divided to form a see of Leicester.

'LEICESTER'S CATHEDRAL. Where Should It Be? An Expert Explodes the Theory that St. Margaret's was Built on the Site of a Saxon Cathedral, and Decides in Favour of St. Martin's. In view of the probable division of the Peterborough Diocese, and the establishment of a See of Leicester, there is much local discussion as which of our historic churches should be raised to the dignity of a Cathedral. Those who favour St. Margaret's on the strength of the statement that it is built on the site of the Saxon Cathedral of Leicester will get a shock when they read a historic survey of the question just published by Mr. A. Hamilton, M.A., F.S.A., Editorial Secretary of the Leicestershire Archaeological Society, and one of the best authorities in the country on English Church history. He is not certain that Leicester ever had a cathedral, or anything more than a "missionary bishopric". The tradition appears to have been founded on the fact that St. Margaret's was erected on the "Bishop's Fee", but there is nothing to show that the fee of the Bishops of Lincoln at Leicester, on which St. Margaret's Church stood, had anything to do with the property of the Mid-Anglia Bishops; nor is it likely that, after the long Danish occupation of Leicestershire, any trace of such property was left. It was purely a personal grant made to the first Norman Bishop of Lincoln by the Crown, with other land in Lincolnshire and other parts of his diocese.

'ST. MARGARET'S NOT A CATHEDRAL. Further, if we assume that Leicester possessed a cathedral church of its own in any part of the period between 680 and 869, we have no cause for supposing this hypothetical church to have been on the site of St. Margaret's. The cathedral churches were placed within the confines of the city walls—witness Canterbury, York, and London. St. Margaret's, on the other hand, was a suburban church outside the boundaries of the town; and it is most unlikely that, between the years mentioned, a cathedral church would have been founded in such a situation. In the twelfth and thirteenth centuries the rectory of St. Margaret's was held by the archdeacons of Leicester, and it is likely they held their courts there, but St. Martin's by the fifteenth century, became the church where the archdeacon held his courts; and the Bishops of Lincoln held their visitations of the deanery of Christianity of Leicester, not in St. Margaret's, but in St. Martin's'.

A case for St. Mary de Castro had also been made earlier in the year in the *Leicester Daily Post* (16 April 1920): 'These advocates urge... that in cities which have both a Castle and a cathedral the two are usually found in close proximity... They also urge the picturesque situation of St. Mary's, on the banks of the river, and forming a striking architectural feature for all entering the town from the west. When the time comes for considering the claims of our three ancient churches to assume cathedral dignity, the advocates of St. Mary's will certainly not be without very strong arguments.'

This newsletter is edited by Cynthia Brown and published by Leicestershire Archaeological and Historical Society. Further information about the Society, its publications and other activities can be found on its website at www.lahs.org.uk

**THE LEICESTERSHIRE ARCHAEOLOGICAL &
HISTORICAL SOCIETY**
THE GUILDHALL, GUILDHALL LANE, LEICESTER. LE1 5FQ.
Registered Charity No 503240

President:
Robert Rutland

Mr. Matthew Beamish,
Hon. Membership Secretary LAHS,
c/o ULAS,
School of Archaeology and Ancient History,
University of Leicester, University Road,
Leicester LE1 7RH
Tel 0116 2525234
Email: membership@lahs.org.uk

Membership Form

Categories

Individual Membership £30

Family Membership £40

Student Membership FREE*

Surname:..... Forename:..... Title:..... Initials:.....

Address:

.....

.....

Post Code:..... Telephone:.....

Email Address:.....

*(Only to be used for communicating information with members. *Student membership is contingent upon you providing the email address given to you by your educational institution).*

I wish to become a member at the rate indicated above.

I enclose a cheque/ I have paid by Paypal/ I have made a Standing Order arrangement with my bank/Please send me a Standing Order form *(delete as applicable)*.

If paying by Standing Order please either make your own arrangement with your bank/building society, or request a form from Hon. Mem. Sec. Please make any payments to Sort Code 60-60-06, Account Number 87270080.

Alternatively pay by Paypal: Payments@lahs.org.uk



Data Protection Act

I/We agree to my/our names being stored on a computer database

Signature/s:..... Date:.....

Gift Aid Declaration

Please treat as Gift Aid donations all qualifying previous and/or future subscription payments and/or donations I have made to LAHS (delete as applicable). I confirm I have paid or will pay an amount of Income Tax and/or Capital Gains Tax for each tax year (6 April to 5 April) that is at least equal to the amount of tax that all the charities or Community Amateur Sports Clubs (CASCs) that I donate to will reclaim on my gifts for that tax year. I understand that other taxes such as VAT and Council Tax do not qualify. I understand that LAHS will reclaim 28p of tax on every £1 that I gave up to 5 April 2008 and will reclaim 25p of tax on every £1 that I give on or after 6 April 2008.

Surname: Title:..... Initials:.....

Address:

.....

.....

Post Code:

Signature/s:..... Date:.....